



Full Length Article

Soil Properties Shape Species Diversity and Community Composition of Native Arbuscular Mycorrhizal Fungi in *Retama raetam* Roots Growing on Arid Ecosystems of Tunisia

Raya Abdedaïem^{1,2*}, Mokthar Rejili¹, Mosbah Mahdhi³, Philippe de Lajudie⁴ and Mohamed Mars¹

¹Faculté des Sciences de Gabès, Laboratoire de recherche, Biodiversité et Valorisation des Bio-ressources en Zones Arides (BVBZA), Erriadh Zrig, Gabes, Tunisie

²Faculté des Sciences Mathématiques, Physiques et Naturelles de Tunis, Tunisie

³Center for Environmental Research and Studies, Jazan University, Jazan, Saudi Arabia

⁴Institut de Recherche pour le Développement (IRD), UMR LSTM, Montpellier, France

*For correspondence: rayaabdedaïem@yahoo.fr

Received 12 June 2019; Accepted 08 October 2019; Published 16 January 2020

Abstract

The aim of this study was to identify the major environmental factors affecting the Arbuscular Mycorrhizal Fungi (AMF) diversity and community composition in the roots of *Retama raetam* growing on arid ecosystems of Tunisia. AM Fungi were assessed by cloning and sequencing of the AMF SSU rRNA gene and therefore checked against NCBI GenBank and MaarjAM database. Thirteen operational taxonomic units (OTUs) were identified in *R. raetam* roots and AMF community was dominated by *Glomeraceae*. Of the totality of OTUs, ten matched previously known virtual taxa (VTX) and 3 OTUs were treated as novel VT and grouped into 3 putative new AMF taxa (pNTX). Correlation analysis reported that high available phosphorus content and high electrical conductivity in the soil decrease AMF richness and diversity. Interestingly, Principal Component Analysis (PCA) and Monte Carlo permutation tests on Canonical Correspondence Analysis (CCA) indicated that soil physic-chemical properties such as soil total nitrogen (TN), soil-available P, EC, and soil texture affected the AMF community composition. No significant relation was found between AMF distribution and soil organic carbon (OC) and soil pH. Our findings provide insights into the nature of AMF communities colonizing *R. raetam* roots and help to link fungal distribution to specific soil properties, which could be exploited in the identification of a wider variety of fungal strains as potential inoculants for rehabilitation and restoration program. © 2020 Friends Science Publishers

Keywords: Arbuscular mycorrhizal fungi; Diversity; Soil properties; distribution; *Retama raetam*; Arid areas

Introduction

Arbuscular mycorrhizal fungi are major components of rhizosphere soils, globally distributed (Munkvold *et al.* 2004) and form symbiosis with the fine roots of terrestrial plants (He *et al.* 2016). This association is strongly implied in plant nutrient uptake and productivity (Smith and Read 2008), host protection against pathogens (Sikes *et al.* 2009) and tolerance to adverse environmental stresses (Zhu *et al.* 2016; Yang *et al.* 2018). In this symbiosis, the AMF acquire carbon compounds from the host plant and in return enhances the uptake of nutrient elements and water in plants (He *et al.* 2016).

An increasing number of reports have highlighted the effect of environmental variables on AMF communities. Soil texture and soil pH are found to be essential factor shaping the AMF community composition (Bainard *et al.* 2014; Xiang *et al.* 2014; Alguacil *et al.* 2016). Furthermore, soil salinity is known to be crucial factors in determining

mycorrhizal communities (Wild *et al.* 2009; Guo and Gang 2013). Interestingly, soil available phosphorus was found to have a deep influence on both AMF abundance and diversity (Geel *et al.* 2014; Beenhouwer *et al.* 2015; Liu *et al.* 2016). However, other reports revealed that roots AMF communities are considerably influenced by the host species (Hazard *et al.* 2012; Gosling *et al.* 2013). Liang *et al.* (2015) suggested that AMF composition and diversity are determined by both soil properties and plant communities. Researches describing the environmental drivers of AMF communities in Mediterranean arid area are lacking until now.

Degradation processes and desertification in Mediterranean arid ecosystems is the combined result of anthropogenic factors related to human activities and natural factors such as scarce, irregular rainfall, dry and hot summer (Requenaf *et al.* 1997). These conditions disturb biodiversity (Djellouli 1996), soil properties and major plant nutrients especially P and N (Requenaf *et al.* 1997).

The rehabilitation of degraded landscapes is thus a major preoccupation in Mediterranean arid area of South Tunisia. Among plant species adapted to xeric conditions, *Retama raetam*, is a desert shrub, common to arid ecosystems around the Mediterranean basin (Pnueli *et al.* 2002). It revealed a great ecological importance and is widely used for dune stabilization and soil protection from wind erosion thanks to its very developed root system (Ferchich 1996). This makes *R. raetam* a legume of choice for use in sustainable production systems. Previous reports mainly focus on the capacity of this specie to establish symbiotic associations with nitrogen-fixing bacteria (Mahdhi *et al.* 2018) and arbuscular mycorrhizal fungi (Mosbah *et al.* 2018). However, the knowledge about the relation between soil properties, AMF diversity and structure of communities in *R. raetam* roots is not available in this region. Therefore, understanding the nature of AMF communities colonizing *R. raetam* roots and their correlation to soil properties under harsh conditions is of interest in order to identify a wider variety of fungal strains as potential inoculants for rehabilitation and restoration programs. The main objectives of the current study were to (i) characterize AMF communities in the roots of *R. raetam* across four different sites located in arid area of South Tunisia. (ii) Detect specific AMF taxa for *R. raetam* roots. (iii) Explore, for the first time, the major environmental factors affecting the diversity and communities' composition of AMF in the roots of this legume under harsh conditions.

Materials and Methods

Study sites and sampling

The four study sites are located in South Tunisia in arid Mediterranean climate (Fig. 1). These areas are marked by a mean annual temperature above 20°C (mean temperature is 12°C in December and 30°C in July) and annual mean rainfalls vary between 200 and less than 100 mm. Sites are located in (1) BouHedma National Parc (SidiBouzid coordinates, 34°29'N–9°29'E), (2) Institute of Arid Regions-Medenine (Medenine coordinates, 33°29'N–10°38'E), (3) Institute of Arid Regions-Chenchou (Gabès coordinates, 33°53'N–9°53'E) and (4) Oued Dkouk Natural Reserve (Tataouine coordinates, 32°37'N–10°18'E) (Fig. 1). Fine roots of the plant species *R. raetam* were carefully collected. Rhizosphere soil was collected from soil surrounding the roots of the studied plant.

Soil analysis

Rhizosphere soil samples were subjected to the following analyses. Soil texture was measured according to Robinson's pipette method (Naanaa and Susini 1988). Soil pH was determined in soil water suspensions by pH meter (Matest, Italia). Electrical conductivity was measured using



Fig. 1: Map of Tunisia indicating the location of the four studied sites in the arid area of southern Tunisia

a conductivity meter (Bibby Scientific, UK). Total soil nitrogen (TN) and organic carbon (OC) contents were measured using an elemental analyzer (commercial service). The soil available phosphorus that is sodium bicarbonate-extractable phosphorus (Olsen *et al.* 1954) was determined by the colorimetric method.

Estimation of AM root colonization

The roots were washed with water and clarified with a potassium hydroxide (KOH) solution (10%) in the water bath at 90°C for 45 min. Root segments were then rinsed with distilled water and stained with Trypan blue 0.05% (w/v). They were finally placed on slides, mounted in a glycerol solution and observed with a bright-field microscope (×400) (Trouvelo *et al.* 1985). The frequency (F%) and intensity of mycorrhization (%M) were estimated using Mycocalc program (<http://www2.dijon.inra.fr/mychintec/Mycocalc-prg/download.html>).

Isolation and enumeration of AM fungal spores

Spores were isolated from the rhizosphere soil samples through the wet-sieving and decanting method described by Gerdemann and Nicolson (1963). One hundred grams for each soil sample was independently suspended in 1 L water and then stirred for 10 min. We used 3 sieves to retain the spores (25, 100 and 500 µm). The spores retained on the 25 and 100 µm sieves were independently recovered by sucrose gradient centrifugation and suspended in water for checking under a binocular stereomicroscope (×45). Two different size spore classes (25–100 µm) and (100–200 µm) were counted.

Root DNA extraction and nested PCR

Dried roots (50°C) were crushed in liquid nitrogen with mortar and pestle. DNA extraction from 50 mg crushed roots was performed using DNeasy® Plant Mini Kit (Qiagen). Root DNA quantification was determined by fluorescence with the Quant-iT™ PicoGreen® dsDNA Assay Kit (Invitrogen) on a microplate reader (Tecan) (Infinite M200). PCR was carried out in an Applied Biosystems Veriti 96 well thermocycler and the GoTaq® DNA Polymerase (Promega) in a volume of 25 µL. Root DNA extracts served as template DNA in a first PCR amplification step using the universal eukaryote primers NS1 (5'-GTAGTCATATGCTTGTCTC-3') and NS4 (5'-CTTCCGTCATTCTTTAAG-3') to amplify 1.2 kb fragments of the small subunit (SSU) rRNA gene (White *et al.* 1990). PCR was performed using 2 µL of composite root DNA (10 ng), 200 µM dNTPs, 0.5 µM of each primer, 200 ng µL⁻¹ BSA, 1 U Taq DNA polymerase and the reaction buffer. The thermic profile consisted in an initial denaturation at 94°C for 3 min, 30 cycles at 94°C for 30 s, 40°C for 1 min, 72°C for 1 min, followed by a final elongation step at 72°C for 10 min. Undiluted amplicons were directly used as target DNA (2 µL) in a second PCR step using the universal eukaryote primer NS31 (5'-TTGGAGGGCAAGTCTGGTGCC-3') (Simon *et al.* 1992) and the AMF-specific primer AM1 (5'-GTTTCCCGTAAGGCGCCGAA -3') (Helgason *et al.*, 1998) to amplify ca. 550 bp fragments. Reagents concentrations in the reaction mix were the same as in the PCR step 1 but the annealing temperature was set to 60°C.

Cloning and sequencing

The PCR products were cooled in gel, purified with the Pure Link Quick Gel Extraction Kit (Invitrogen), eluted in 30 µL buffer, then quantified with a Nanodrop ND-1000 Spectrophotometer (Thermo Fisher Scientific) at 260 nm and further cloned with the pGEM-T Easy vector (Promega) in XL2-Blue ultracompetent cells (Agilent Technologies). For each library, 96 white clones were randomly selected, and DNA was extracted from cell aliquots by 7 heat shocks (96°C – 2 min, 4°C – 10 sec) in a volume of 30 µL sterile water. Cell debris were then pelleted at 3,000 × g. The supernatants were used as template DNAs in an amplification (PCR) using the vector primers 17 merpUC/M13 (Promega). PCR products having the expected size were sequenced by Genoscreen (Sanger Technology, <http://www.genoscreen.fr>).

Glomeromycota identification and phylogenetic analysis

Sequences were blasted using the BLASTn algorithm and compared with sequences found in the GenBank database (Altschul *et al.* 1997). Non-AMF sequences were excluded. Representative sequences were aligned with a selection of AMF reference sequences using the ClustalX algorithm

(Thompson *et al.* 1997) then grouped into operational taxonomic units (OTUs) based on 97–100 % sequence identities using the Mothur program (Schloss *et al.* 2009) and compared to the virtual taxa (VTX) listed in the Maarj AM database (<http://maarjam.botany.ut.ee/>) (Öpik *et al.* 2010). VTX are sequence groups based on bootstrap support and identity value (ID) ≥97% sequence similarity. Sequences not assigned to existing VTX (ID<97%) were considered as putative new taxa (pNTX). Matrices of pairwise distances were produced with the Maximum Composite Likelihood (MCL) approach (based on a 277 nt alignment) using Mega X software (Kumar *et al.* 2018). A specific pNTX includes sequences with a distance greater than 3%. A selection of AMF ribosomal reference sequences published in GenBank were included in the phylogenetic analysis, while *Archaeospora trappei* and *A. schenckii* were used as outgroups. Maximum-likelihood (ML) phylogenetic analyses (Kimura 2-parameters, 1000 replications) were produced using Molecular Evolutionary Genetics Analysis Mega-X software (Kumar *et al.* 2018).

Nucleotide sequence accession numbers

A total of 194 Glomeromycota of 18S rDNA sequences were obtained. Twenty-eight representative sequences have been deposited at the National Centre for Biotechnology Information (NCBI) GenBank under the accession numbers KU707432-KU707459.

Statistical analyses

All the statistical analyses were performed using XLSTAT (v2010.5.04) software. Significant differences between quantitative values (spore numbers, mycorrhization scores, soil properties) were determined by the one-way analysis of variance ANOVA and Fisher's least significant difference (LSD) at a significance level of $P < 0.05$. The Richness (S) indicates the number of different AMF OTUs in the sampled community. The Shannon-Weaver (H') index was calculated as a measure of AMF diversity from the equation $H' = -\sum p_i (\ln p_i)$ where p_i is the proportion of individuals found in the i th species (p_i is estimated as n_i/N , [here and throughout, n_i is the number of individuals in the each species]). Pearson's correlation coefficients were calculated to evaluate relations among the soil properties, root mycorrhizal colonization (F% and M%), spore density, Richness (S) and the Shannon-Wiener diversity index (H') at a significance of $P < 0.05$. A Venn diagram showing the number of site-specific and shared AMF OTUs was shown using a 4-way Venn diagram created in Venny (Oliveros 2007–2015). In order to examine the multivariate relations between the soil characteristics and AMF OTUs distribution, principal component analysis (PCA) was performed. To evaluate the effects of soil properties, Monte Carlo permutation test on canonical correspondence analysis (CCA) was then applied and was conducted using 1000 random permutations. The forward-

selection procedure arranged the variable according to their importance and significance for the distribution of the OTUs.

Results

Soil analysis

The soil physicochemical parameters are summarized in Table 1. The soil texture was sandy loam in soils from BouHedma, Medenine and Oued Dkouk and sandy clay loam in Chenchou's soil. pH ranged from 8.34 to 8.6. Organic carbon (OC) was significantly higher in BouHedma soils than other sites. Total nitrogen (TN) values ranged from 0.08% in Oued Dkouk's soil to 0.35% in Chenchou's soil. Both Electric conductivity and available P contents showed the highest values in Oued Dkouk's soils whereas the lowest values were from Medenine's soils.

Root colonization

All root samples observed for AMF colonization contained AMF. The percentage of mycorrhizal colonization was high for all sites and ranged from 94.64% to 97.78%. The intensity of mycorrhization was moderate to high and ranged from 36.02 to 76.26%, respectively in *R. raetam* roots from Chenchou and BouHedma soils (Fig. 2).

AMF spores number

High density of AMF spores was generally observed in field soils. The highest average density of the smallest size spores (25–100 μm) was evidenced in *R. raetam* soils from Medenine (4748 spores per 100 g soil) (Fig. 3) and the lowest average density was in rhizosphere from BouHedma (2057 spores per 100 g soil). Moreover, the density of spores of the largest class (100–200 μm) was far below that of smaller spores and reached at best ca. 655 spores per 100 g soil rhizosphere from Medenine.

AMF community composition

OTUs abundance and diversity: Partial SSU rDNA sequences from roots were successfully amplified by nested PCR (550 bp). A total of 194 sequences belonging to AMF were obtained from the 4 clone libraries. Sequences not affiliated to AMF were eliminated from sequence analysis and community structure analysis. After BLASTn and

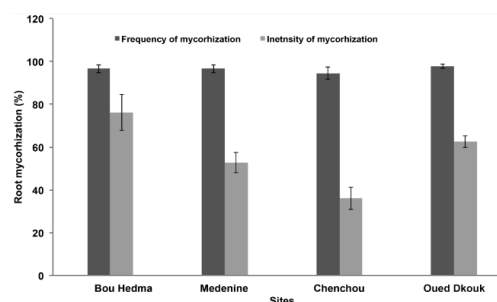


Fig. 2: Root mycorrhization of *R. raetam*: mycorrhizal frequency (F) (dark grey bars) and mycorrhizal intensity (M) (pale grey bars). Data are reported as (mean \pm SE) for three replicate per samples. Significant differences between the samples are indicated by different letters above the bars and were determined by using Fisher's least significant difference (LSD) at the 0.05 level after one -way ANOVA

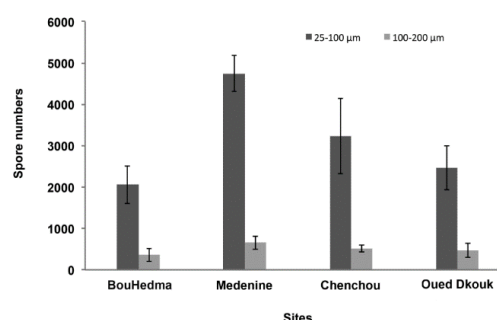


Fig. 3: AMF spore number in rhizosphere soil of *R. raetam* in four different sites: spores of the smallest class (25-100 μm) (dark grey bars), spores of the largest class (100-200 μm) (pale grey bars). Data are reported as (mean \pm SE) for three replicate per samples. Significant differences between the samples are indicated by different letters above the bars and were determined by using Fisher's least significant difference (LSD) at the 0.05 level after one -way ANOVA

phylogenetic analyses the sequences were clustered into 13 OTUs supported by a bootstrap value $> 97\%$ (Fig. 4, Table 2). Among the 13 OTUs, 12 OTUs (182 sequences) belonged to the Glomeraceae family, while only 1 OUT (12 sequences) represented Diversisporaceae family. The genera of Glomeraceae belonging to *Glomus*, *Funneliformis*, *Rhizoglossus*, *Septoglossus* were found. The most abundant genera were represented by *Funneliformis*, accounting for 40.72% of the sequences, followed by *Rhizophagus*

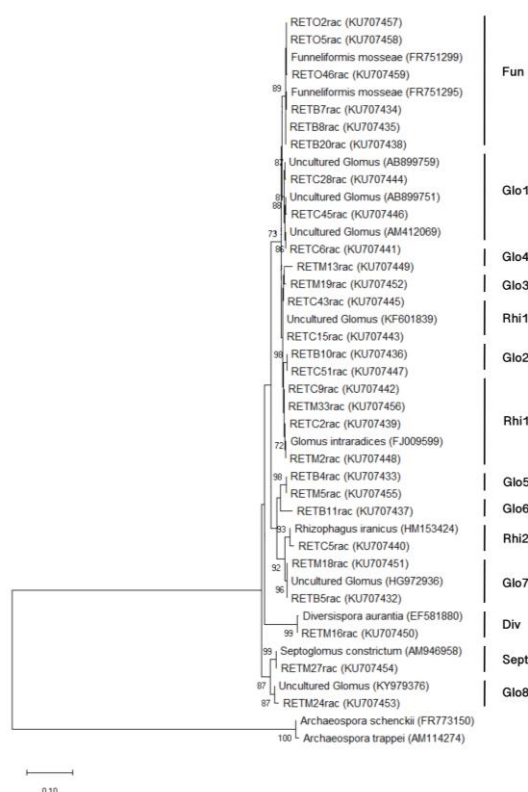
Table 1: Physical and chemical properties of the studied soils

	Bou Hedma	Medenine	Chenchou	Oued Dkouk
Soil texture	Sandy loam	Sandy loam	Sandy clay loam	Sandy loam
Sands (%)	68	69	66	70
Silt (%) 24	21	17	20	
Clay (%)	6	8	15	7
pH	8.3	8.35	8.7	8.32
Electrical Conductivity EC ($\mu\text{S}/\text{cm}$)	2.52	1.55	1.83	3.46
Organic Carbon (%)	1.27	0.73	0.85	0.45
Total Nitrogen (%)	0.1	0.2	0.35	0.08
Available Phosphorus (mg/Kg soil)	15.59	9.58	12.12	23.5

Different letters indicate significant differences at $P < 0.05$ ($n=3$)

Table 2: Distribution of 13 AMF OTUs taxa (10 VTX and 3pNTX) detected in the root samples of *R. raetam* from the four studied sites

OTU name	Taxonomic affiliation	Maarjam database virtual taxa	BouHedma	Medenine	Chenchou	Oued Dkouk
Glo1	<i>Funniformis mossea</i>	VTX00105				
Rhi1	<i>Uncultured glomus</i>	VTX00092				
Glo2	<i>Rhizophagus intraradices</i>	VTX00113				
Glo3	<i>Uncultured glomus</i>	VTX00114				
Glo4	<i>Uncultured glomus</i>	VTX00115				
Glo5	-	pNTX C				
Glo6	-	pNTX A				
Glo7	-	pNTX B				
Rhi2	<i>Rhizophagus iranica</i>	VTX00155				
Glo8	<i>Uncultured glomus</i>	VTX00342				
Div	<i>Diversispora spurca</i>	VTX00263				
Sept	<i>Septoglomus constrictum</i>	VTX00064				
Glo8	<i>Uncultured glomus</i>	VTX00063				

**Fig. 4:** Maximum likelihood tree based on partial 18S rDNA gene sequences amplified from root DNA from *V. tortilis*. Bootstrap values calculated for 1000 replications are indicated. Scale bar = 10% nucleotide divergence. Accession numbers from GenBank are given in brackets. Sequences are labeled from the left according to the name of legume specie (RET: *Retama raetam*), the site identity (e.g., M, with M for Medenine, B for BouHedma, C for Chenchou, O for Oued Dkouk), No. attributed to the sequence (e.g., 16)

(26.3%), *Glomus* (18.56%), *Diversispora* (6.19%). *Septoglomus* corresponded to less than 1% of total sequences. Twelve OTUs were ascribed to Glomeraceae family, within the genus Gloms, were retrieved 8 OTUs, of which 5 OTUs (Go1, Glo2, Glo3, Glo7 and Glo8) represented sequences of uncultured *Glomus* species and 3

OTUs (Glo4, Glo5 and Glo6) didn't matched to any Known Glomycomycota sequence. In the genera *Funniformis* and *Septoglomus*, OTUs named Fun and Sept were identified as *Funniformis mossea* and *Septoglomus constrictum* respectively. OTUs Rhi1 and Rhi2 assigned to *Rhizophagus* matched to sequences of Known species (*Rhizophagus intraradices* and *Rhizophagus iranica*). While, OTUs belonging to *Diversispora* (Div) matched only to sequences of known species (*Diversispora spurca*).

OTUs identification based on the Maarj AM database:

The MaarjAM database of published Glomeromycotina SSU rRNA gene sequences was used to confirm the assignment of our OTUs to sequences of Glomeromycota. Ten OTUs (>97% similarity) matched previously-known virtual taxa (VT; i.e., a molecular operational taxonomic unit) and 3 OTUs (<97% similarity to previously known VT belonging to Glomeraceae) were considered as novel VT and grouped into 3 putative new taxa (pNTX) (Table 3).

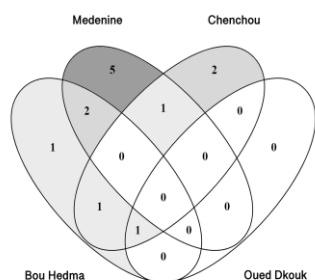
OTUs distribution: *Funniformis mossea* (Fun) representing the most abundant OTU was present in all sites except those of Medenine, *Rhizophagus intraradices* (Rhi1) occurred in two sites (Medenine and Chenchou). Two OTUs, Glo5 and Glo7 were found in both BouHedma and Medenine's sites. In the same way, Glo3, Glo4, Glo8, Div and Sept were found exclusively in *R. raetam* roots from BouHedma. *R. iranica* (Rhi2) and Uncultured *Glomus* (Glo1) were found exclusively in *Retama* roots from Chenchou site.

The shared and site-specific AMF OTUs for sites were illustrated in a Venn diagram (Fig. 5). We found that five OTUs (Fun, Rhi1, Glo2, Glo5 and Glo7) accrued in more than one site, Glo5 and Glo7 were found only shared by BouHedma and Medenine's sites, Rhi1 was found shared by Medenine and Chenchou's sites. *F. mossea* was found shared by BouHedma and Chenchou's sites. The remaining eight OTUs (Glo1, Glo3, Glo4, Glo6, Glo8, Div, Sept and Rhi2) were specific to one site. No site-specific AMF OUT was determined in Oued Dkouk. In return one (Glo6), two (Glo1, Rhi2) and five AMF OUTs (Glo3, Glo4, Glo8, Sept and Div) were specific to BouHedma, Chenchou and Medenine sites, respectively.

Table 3: Putative new taxa (pNTX) generated by Pairwise Distances Matrix Sequences sharing distances less than 3% where considered as belonging to the same pNTX and specified by an alphabetic letter (A, B, C)

pNTX	Representative sequence	RETB4rac (KU707433)	RETB11rac (KU707437)	RETM13rac (KU707449)	RETM5rac (KU707455)
pNTX A	RETB4rac (KU707433)	1			
pNTX B	RETB11rac (KU707437)	0.0399	1		
pNTX C	RETM13rac (KU707449)	0.068	0.076	1	
pNTX A	RETM5rac (KU707455)	0.0001	0.0399	0.0068	1

Sequences sharing distances less than 3% where considered as belonging to the same pNTX and specified by an alphabetic letter (A, B, C)

**Fig. 5:** Venn diagram reporting the number of unique and shared OTUs detected in *Retama* roots among studied sites

Effect of soil properties on phylogenetic diversity and AMF abundance

R. raetam from Medenine soil showed the highest OTU Richness (8 OTUs) while only one OTU was detected in *R. raetam* from Oued Dkouk's soil. According to the OTU diversity estimated by Shannon's index, the greatest AMF diversity was found in *R. raetam* roots from Medenine soil (1.68), followed by Chenchou soil (1.51) and BouHedma soil (1.45). A null AMF diversity was found in Oued Dkouk soil. The Pearson's correlation coefficients between soil chemical properties, Shannon diversity index (H') and Richness (R) are presented in Table 4. There was a significant and negative relationship between avail P, EC and S and H' , while there was no correlation between other soil variables (TN, soil pH, OC), soil texture (clay, sand and silt contents) and AMF richness and diversity.

Effect of soil physicochemical properties on AMF community composition

PCA (principal component analysis) was performed to infer the relationship between AMF distribution and the soil variables. The resulting ordination is presented in Fig. 6. The cumulative percentage variance of species data showed that the first two PCA axes explain 77.62% of the variability in species data. PCA on AMF distribution and soil variables showed that AMF communities in *R. raetam* roots differed significantly between the studied sites and suggested that many AMF (Rhi1, Glo3, Glo4, Glo5, Glo8, div, Sept) prefer soil conditions with lower soil salinity (EC) and available P. The relative preference for higher salinity and available P in Fun, Glo1, Glo2, Glo6, Glo7 and Rhi2 AMF was also

suggested. PCA showed also that Glo1, Glo2, Rhi1 and Rhi2 prefer soil with high nitrogen. The results of Monte Carlo permutation tests on canonical correspondence analysis indicated that environmental variables, such as soil TN, soil-available P, EC, and soil texture affected the AMF distribution significantly ($P < 0.05$), in which the effect of soil available P, TN and EC was stronger than that of other variables ($P < 0.0001$) (Table 5). No significant relation was found between AMF community composition and soil organic carbon (OC) and pH.

Discussion

Our data revealed that, in Arid area of Tunisia soil properties shaped the community composition of arbuscular mycorrhizal fungi in *R. raetam* root, which nevertheless always maintained high spore density and high mycorrhization levels. Here, we identified AMF species colonizing *Retama* roots and described their diversity, distribution and community composition using nested PCR, cloning and sequencing of the chromosomal small subunit ribosomal RNA (SSU) gene marker.

The occurrence of indigenous mycorrhizal infection and spore density varied among rhizospheres (Fig. 2 and Fig. 3). The spore density is known to vary considerably among different ecosystems. Values range from a few dozen to 10,000 spores per 100 g soil (Johnson and Wedin 1997; Tao and Zhiwei 2005; Bouazza *et al.* 2015), although spore density in rhizosphere of *R. raetam* was relatively high. Significant differences were found in spore density of small (25–100 μm) and large (100–200 μm) spores in all rhizospheres, and more AMF small sized spores were found. The dominance of such small sized spores was also reported in arid and semiarid regions (Stutz *et al.* 2000; Tao and Zhiwei 2005; Wu *et al.* 2014). In our study, *R. raetam* growing in arid area characterized by high temperature was typically AM plants with high frequency of mycorrhization ($F > 90\%$) showing the capacity of this legume to enrich the soil with "infective" mycorrhizal propagules. This finding was consistent with other reports on drought ecosystems (Stutz *et al.* 2000; Tao *et al.* 2003).

Pearson's correlation analysis demonstrated that soil properties have no influence on AMF colonization or spore density (Table 4). Halder *et al.* (2016) showed that correlation between edaphic factors and AMF colonization of six plant species was not significant. Aliasgharzadeh *et al.* (2001) found that spore number was not correlated to soil

Table 4: Pearson correlation coefficients between soil properties, OTU Richness and Shannon Wiener diversity index, root mycorrhization and spore number among study sites

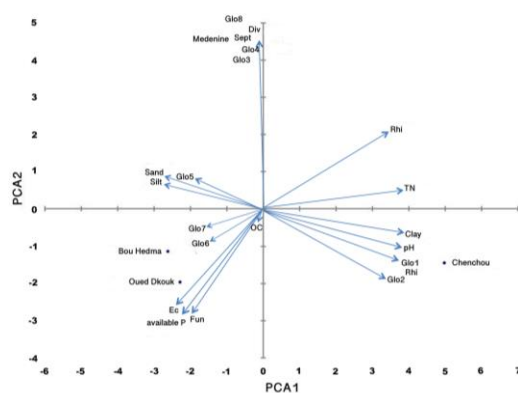
	OC	Clay	Silt	Sand	pH	EC	Avail P	TN	S	H'	F	M	Sp (25-100 μ m)	Sp (100-200 μ m)
OC	1	-0.081	0.546	-0.513	-0.012	-0.462	-0.411	0.034	0.414	0.656	-0.331	0.366	-0.312	-0.519
Clay		1	-0.877	-0.813	0.996	-0.411	-0.422	0.953	0.142	0.316	-0.908	-0.919	0.246	0.291
Silt			1	0.439	-0.844	0.070	0.103	-0.763	0.141	0.094	0.596	0.927	-0.291	-0.434
Sand				1	-0.853	0.588	0.567	-0.827	-0.323	-0.625	0.969	0.565	0.012	0.090
pH					1	0.604	0.635	-0.124	-0.779	-0.481	-0.097	0.179	-0.917	-0.842
EC						1	0.998	-0.663	-0.953	-0.972	0.652	0.434	-0.662	-0.497
Avail P							1	-0.675	-0.955	-0.957	0.644	0.465	-0.702	-0.546
TN								1	0.435	0.563	-0.939	-0.918	0.463	0.452
S									1	0.924	-0.392	-0.241	0.735	0.559
H'										1	-0.631	-0.264	0.484	0.289
F											1	0.743	-0.198	-0.145
M												1	-0.555	-0.628
Sp (25-100 μ m)													1	0.973
Sp (100-200 μ m)														1

OC, organic carbon; EC, electric conductivity; Avail P, available phosphorus; TN, total nitrogen; S, OTU Richness; H', Shannon–Wiener diversity index; F, Frequency of mycorrhization; M, Intensity of mycorrhization, Sp, Spores number. The values highlighted in bold are statistically significant ($P < 0.05$). Correlations above 0.75 are strong, 0.35-0.75 moderate and less than 0.35 weak

Table 5: Results of Monte Carlo permutation tests (1000 permutations) of the Canonical Correspondence Analysis CCA for the relationships between soil properties and AMF community

	F value	P value
Sand	4.146	0.006
Silt	4.876	0.002
Clay	5.299	0.002
pH	2.688	0.056
EC	6.751	<0.0001
OC	2.526	0.06
T N	6.140	<0.0001
Avail P	7.019	<0.0001

EC Electric conductivity; OC, Organic carbon; TN, total nitrogen; OC, Organic carbon; Avail P, Available Phosphorus. The values highlighted in bold are statistically significant ($P < 0.05$)

**Fig. 6:** Principal-component analysis (PCA) of the AMF community composition in the roots of *Retama raetam* in four different soil types. The model explained 77.62% of the whole variance. OC, organic carbon; EC, electric conductivity; Avail P, available phosphorus; TN, total nitrogen

factors like EC, pH, and sodium absorption ratio, but correlated with soil texture.

A total of 194 symbiotic AMF clones associated to native *R. raetam* roots growing on arid Tunisian soils were

analysed using the nested PCR, cloning, sequencing of the chromosomal small subunit ribosomal RNA (SSU) gene marker. Results showed that diverse AMF fungal communities are present in *R. raetam* roots (13OTUs or VTXs) (Table 2 and Fig. 4). Ten of the 13OTUs detected in this study clustered with virtual taxa from the MaarjAM database and were clearly grouped with sequences of known taxa (Fun, Rhi1, Rhi2, Sept and Div) or also with sequences of uncultured *Glomus* spp (Glo1, Glo2, Glo3, Glo7 and Glo8). These uncultured *Glomus* are originating from different host plants distributed in different geographical areas, even including different continents as was shown by Alguacil *et al.* (2008). The three other OTUs (Glo4, Glo5 and Glo6) were separate from any AMF reference sequence and treated as 3 putative new taxa (pNTX) (MaarjAM database) and they may constitute new species within the Glomeraceae species suggesting that there is a substantially novel diversity of AMF taxa in arid area of South Tunisia, which was in agreement with other diversity studies in gypsum soils under semiarid area of southeastern Spain (Alguacil *et al.* 2008) and salinized south coastal plain of Laizhou Bay in China (Guo and Gong 2013). In our study, *Glomeraceae* species was the dominant family in all studied sites which is consistent with previous studies in arid and semi-arid areas (Mathur *et al.* 2007; Bai *et al.* 2013); this could be explained by the fact that this family tolerates high soil temperature (Al-Raddad 1993).

The richness and diversity of AMF in the roots of *R. raetam* were found to be different between studied soils. Significant negative correlations were found between the soil salinity (EC) and available P and AMF richness and diversity (Table 4). Cherif *et al.* (2015) explained that salinity alters propagules hydratation and unable their germination; which maintain spores under long term dormancy stage. Consequently, roots infection by spores decreased (Saint-Etienne *et al.* 2006). Similarly, negative effect of high available P on AMF richness and diversity (Bainard *et al.* 2014; Geel *et al.* 2014; Beenhouwer *et al.*

2015) could be explained by the fact that AMF taxa differ in their tolerance to high P availability (Verbruggen *et al.* 2012), and that rising P levels diminish the provision of plant assimilated carbohydrates towards the mycorrhizal symbionts as supported by Liu *et al.* (2012) leading to a competition for carbohydrates between AMF and can consequently reduce AMF diversity on the host plant root. According to PCA biplot, the determinal effect of soil avail P and Electric conductivity was not limited on AMF richness and diversity, but also on AMF community distribution. Previous AMF studies mention that soil available P (Liu *et al.* 2016) likewise soil salinity (Wild *et al.* 2009; Guo and Gang 2013) is crucial drivers of mycorrhizal communities. Some AMF were found to be dominant under high soil available P and electric conductivity. *F. mosseae* is one such AMF OUT, this AMF specie is commonly found in soils and have a worldwide distribution. Sahodaran *et al.* (2019) testing the effect of root inoculation on plant and soil showed that inoculation with this specie increase the soil available P. *F. mosseae* was also observed in soil with high salinity levels (Aliasgharzadeh *et al.* 2001) and is known by its capacity in protecting plants from determinal effects of salt stress (Bharti *et al.* 2013).

Other soil physicochemical properties (nitrogen content, soil Clay, Sit, and Sand contents) appears also to be strong factors driving the distribution of AM fungal communities. PCA and Monte Carlo Permutation test on CCA analysis showed a positive significant relationship between *Glo1*, *Glo2*, *Rhi1*, *Rhi2* and soil total nitrogen (TN). It seems that total N can be a determinant in improving AM hyphal length and mycorrhizal biomass as previously reported by Treseder and Allen (2002). Furthermore, soil silt, sand and clay contents affected AMF distribution. The involvement of soil texture in the structuring of AM fungal communities has often been reported (Herrmann *et al.* 2016). Interestingly, soil pH and soil OC were not significantly related to AMF community distribution.

Conclusion

In our study, a high spore density and high mycorrhization levels were revealed across the different sites. We identified the *R. raetam* roots AMF communities at the species and genus level and described new AMF lineages within the Glomeraceae species. High available Phosphorus content and electric conductivity in the soil decrease AMF richness and diversity. Abiotic factors, in particular soil properties (soil total nitrogen, available P, electric conductivity and soil texture) shape AMF communities on *Retama* roots. For the first time, our findings provide insights into factors affecting AMF diversity and communities' distribution of AMF colonizing *Retama* roots, which could be exploited in the identification of a wider variety of fungal strains as potential inoculants for rehabilitation and restoration program.

Acknowledgements

We thank personel staff of BouHedma National Park, Natural reserve of Oued Dkouk and Institute of arid regions of Chenchou and Medenine for facilities and support for soil sampling. We are grateful to Ezekiel Baudoin for his support and contribution to this research. We thank Dr. Abdessalem Hammouda (University of Gabes) for help with image analysis.

References

- Alguacil MM, MP Torres, A Montesinos-Navarro, A Roldán (2016). Soil characteristics driving arbuscular mycorrhizal fungal communities in semiarid Mediterranean soils. *Appl Environ Microbiol* 82:3348–3356
- Alguacil M, A Roldán, M Torres (2008). Complexity of Semiarid Gypsophilous Shrub Communities Mediates the AMF Biodiversity at the Plant Species Level. *Microb Ecol* 57:718–727
- Aliasgharzadeh N, SN Rastin, H Towfighi, A Alizadeh (2001). Occurrence of arbuscular mycorrhizal fungi in saline soils of the Tabriz Plain of Iran in relation to some physical and chemical properties of soil. *Mycorrhiza* 11:119–122
- Al-Raddad A (1993). Distribution of different *Glomus* species in rainfed areas in Jordan. *Dirasat* 20:165–182
- Altschul SF, TL Madden, AA Schaffer, J Zhang, Z Zhang, W Miller, DJ Lipman (1997). Gapped BLAST and PSI-BLAST: A new generation of protein database search programs. *Nucl Acids Res* 25:3389–3402
- Bai G, YY Bao, GX Du, YL Qi (2013). Arbuscular mycorrhizal fungi associated with vegetation and soil parameters under rest grazing management in a desert steppe ecosystem. *Mycorrhiza* 23:289–301
- Bainard L, M Dai, E Gomez, YT Arias (2014). Arbuscular mycorrhizal fungal communities are influenced by agricultural land use and not soil type among the Chemozem great groups of the Canadian Prairies. *Plant Soil* 387:351–362
- Beenhouwer MD, MV Geel, T Ceulemans, D Mutela, B Lievens, O Honnay (2015). Changing soil characteristics alter the arbuscular mycorrhizal fungi communities of Arabica coffee (*Coffea arabica*) in Ethiopia across a management intensity gradient. *Soil Biol Biochem* 91:133–139
- Bharti N, S Baghel, D Barnawal, A Yadav, A Kalra (2013). The greater effectiveness of *Glomus mosseae* and *Glomus intraradices* in improving productivity, oil content and tolerance of salt-stressed menthol mint (*Mentha arvensis*). *J Sci Food Agric* 93:2154–2161
- Bouazza MK, Z Ighilhariz, PD Lajudie, R Duponnois, A Bekki (2015). Assessing the native arbuscular mycorrhizal symbioses to rehabilitate a degraded coastal sand dune in Algeria. *Intl J Agric Crop Sci* 8:194–202
- Cherif KB, A Boutekrab, J Fontaine, FLaruelle, Y Dalpé, AL Sahrroui (2015). Impact of soil salinity on arbuscular mycorrhizal biodiversity and microflora biomass associated to *Tamarix articulata* Vahl rhizosphere in arid and semiarid Algerian areas. *Sci Total Environ* 533:488–494
- Djellouli Y (1996). *Degradation at Algerian Steppe Ecosystems, Consequences of Dryness*. Publication Académie des Sciences (Chine) - International Conference on Temperature Grassland for the 21st Century, Beijing, China
- Ferchich IA (1996). Etude climatique en Tunisie presaharienne. *Medit* 7:46–53
- Geel MV, P Busschaert, O Honnay, B Lievens (2014). Evaluation of six primer pairs targeting the nuclear rRNA operon for characterization of arbuscular mycorrhizal fungal (AMF) communities using 454 pyrosequencing. *J Microbiol Meth* 106:93–100
- Gerdemann JW, TH Nicolson (1963). Spores of mycorrhizal Endogone extracted from soil by wet sieving and decanting. *Trans Brit Mycol Soc* 46:235–244
- Gosling P, A Mead, M Proctor, JP Hammond, GD Bending (2013). Contrasting arbuscular mycorrhizal communities colonizing different host plants show a similar response to a soil phosphorus concentration gradient. *New Phytol* 2:546–556
- Guo X, J Gong (2013). Differential effects of abiotic factors and host plant traits on diversity and community composition of root-colonizing arbuscular mycorrhizal fungi in a salt-stressed ecosystem. *Mycorrhiza* 24:79–94

- Halder M, AK Dey, AKMS Alam, AN Chowdhury, M Mondal, JC Joardar, MDS Amin, DK Roy, MH Kobir (2016). Mycorrhizal colonization status and rhizosphere soil properties of BCSIR reserve forest Rajshahi, Bangladesh. *Curr World Environ* 11:720–727 Available at <http://www.cwejournal.org?p=958/>
- Hazard C, P Gosling, CVD Gast, DT Mitchell, FM Doohan, GD Bending (2012). The role of local environment and geographical distance in determining community composition of arbuscular mycorrhizal fungi at the landscape scale. *ISME J* 7:498–508
- He F, B Yang, H Wang, Q Yan, Y Cao, X He (2016). Changes in composition and diversity of fungal communities along *Quercus mongolica* forests developments in Northeast China. *Appl Soil Ecol* 100:162–171
- Helgason T, TJ Daniell, R Husband, AH Fitter, JPW Yong (1998). Ploughing up the wood-wide web. *Nature* 30:394–431
- Herrmann L, D Lesueur, L Brau (2016). Diversity of root-associated arbuscular mycorrhizal fungal communities in a rubber tree plantation chronosequence in Northeast Thailand. *Mycorrhiza* 26:863–877
- Johnson NC, DA Wedin (1997). Soil carbon, nutrients, and mycorrhizae during conversion of dry tropical forest to grassland. *Ecol Appl* 7:171–182
- Kumar S, G Stecher, M Li, C Knyaz, K Tamura (2018). Molecular evolutionary genetics analysis across computing platforms. *Mol Biol Evol* 35:1547–1549
- Liang Y, X He, C Chen, S Feng, L Liu, X chen, Z Zhao, Y Su (2015). Influence of plant communities and soil properties during natural vegetation restoration on arbuscular mycorrhizal fungal communities in a karst region. *Ecol Eng* 82:57–65
- Liu W, Y Zhang, S Jiang, Y Deng, P Christic, PJ Murray, X Li, J Zhang (2016). Arbuscular mycorrhizal fungi in soil and roots respond differently to phosphorus inputs in an intensively managed calcareous agricultural soil. *Sci Rep* 6:1–11
- Liu YJ, G Shi, L Mao, G Cheng, S Jiang, X Ma, L An, G Du, NC Johnson, H Feng (2012). Direct and indirect influences of 8 yr of nitrogen and phosphorus fertilization on Glomeromycota in an alpine meadow ecosystem. *New Phytol* 194:523–535
- Mahdhi M, A Nzoue, PD Lajudie, M Mars (2008). Characterization of root-nodulating bacteria on *Retama raetam* in arid Tunisian soils. *Progr Nat Sci* 18:43–49
- Mahdhi M, P de Lajudie, M Mars (2018). Molecular identification of arbuscular mycorrhizal fungal spores associated to the rhizosphere of *Retama raetam* in Tunisia. *Soil Sci Plant Nutr* 64:335–341
- Mathur N, J Singh, S Bohra, A Vyas (2007). Arbuscular mycorrhizal status of medicinal halophytes in saline areas of Indian Thar Desert. *Eur J Soil Sci* 2:119–127
- Munkvold L, R Kjoller, M Vestberg, S Rosendahl, I Jakobsen (2004). High functional diversity within species of arbuscular mycorrhizal fungi. *New Phytol* 164:357–364
- Naanaa W, J Susini (1988). *Methodes D'analyse Physique et Chimique Des Sols*. ES 252, Direction des sols, ministère de l'agriculture et de l'environnement, Tunisie
- Oliveros JC (2007–2015). *Venny. An interactive tool for comparing lists with Venn's diagrams*. Available at: <http://bioinfo.cnb.csic.es/tools/venny/index.html>
- Olsen SR, CV Cole, FS Watanabe, LA Dean (1954). *Estimation of available-phosphorus in soils by extraction with sodium bicarbonate*. USDA, Washington DC, USA
- Öpik M, A Vanatoa, E Vanatoa, M Moora, J Davison, JM Kalwij, Ü Reier, M Zobel (2010). The online database MaarjAM reveals global and ecosystemic distribution patterns in arbuscular mycorrhizal fungi (Glomeromycota). *New Phytol* 188:223–241
- Pnueli L, E Hallak-Herr, M Rozenberg, M Cohen, P Goloubinoff, A Kaplan, R Mittler (2002). Mechanisms of dormancy and drought tolerance in the desert legume *Retama raetam*. *Plant J* 31:319–330
- Requena N, I Jimenez, M Toro, JM Barea (1997). Interactions between plant-growth promoting rhizobacteria (PGPR), arbuscular mycorrhizal fungi and *Rhizobium* spp. in the rhizosphere of *Anthyllis cytisoides*, a model legume for revegetation in Mediterranean semi-arid ecosystems. *New Phytol* 136:667–677
- Sahodaran NK, AK Arun, JG Ray (2019). Native arbuscular mycorrhizal fungal isolates (*Funnelformis mosseae* and *Glomus microcarpum*) improve plant height and nutritional status of banana plants. *J Exp Agric* 2019:1–10
- Saint-Etienne S, S Paul, D Imbert (2006). Arbuscular mycorrhizal soil infectivity in a stand of the wetland tree *Pterocarpus officinalis* along a salinity gradient. *For Ecol Manage* 232:86–89
- Schloss PD, SL Westcott, T Ryabin, JR Hall, M Harmann, EB Hollister, RA Lesniewski, BB Oakley, DH Parks, CJ Robinson, JW Sahl, B Stres, GG Thallinger, DJV Horn, CF Weber (2009). Introducing mothur: Open-source, platform-independent, community-supported software for describing and comparing microbial communities. *Appl Environ Microbiol* 75:7537–7541
- Sikes B, K Cottenie, JN Klironomos (2009). Plant and fungal identity determines pathogen protection of plant roots by arbuscular mycorrhizas. *J Ecol* 97:1274–1280
- Simon L, M Lalonde, TD Bruns (1992). Specific amplification of 18S fungal ribosomal genes from vesicular–arbuscular endomycorrhizal fungi colonizing roots. *Appl Environ Microbiol* 58:291–295
- Smith S, D Read (2008). *Mycorrhizal Symbiosis*, London, UK
- Stutz JC, R Copeman, CA Martin, JB Morton (2000). Patterns of species composition and distribution of arbuscular mycorrhizal fungi in arid regions of southwestern North America and Namibia, Africa. *Can J Bot* 78:237–245
- Tao L, Z Zhiwei (2005). Arbuscular mycorrhizas in a hot and arid ecosystem in southwest China. *Appl Soil Ecol* 29:135–141
- Tao L, L Jianping, Z Zhiwei (2003). Arbuscular mycorrhizas in a valley-type savanna in southwest China. *Mycorrhiza* 14:323–327
- Thompson J, TJ Gibson, F Plewniak, F Jeanmougin, DG Higgins (1997). The CLUSTAL_X windows interface: flexible strategies for multiple sequence alignment aided by quality analysis tools. *Nucl Acids Res* 25:4876–4882
- Treseder KK, MF Allen (2002). Direct nitrogen and phosphorus limitation of arbuscular mycorrhizal fungi: a model and field test. *New Phytol* 155:507–515
- Trouvelo TA, JL Kough, V Gianinazzi-Pearson (1985). Mesure du taux de mycorrhization VA d'un système racinaire. Recherches et méthodes d'estimation ayant une signification fonctionnelle. In: *Aspects Physiologiques et Génétiques Des Mycorhizes*, Dijon, France
- Verbruggen E, MGAVD Heijden, JT Weedon, GA Kowalchuk, WF Rölting (2012). Community assembly, species richness and nestedness of arbuscular mycorrhizal fungi in agricultural soils. *Mol Ecol* 12:2341–2353
- White TJ, T Bruns, SJW Lee, J Taylor (1990). Amplification and direct sequencing of fungal ribosomal RNA genes for phylogenetics. In: *PCR Protocols: A Guide to Methods and Applications*, Vol. 18, pp: 315–322. Innis M, D Gelfand, J Sninsky, T White (eds.). Academic Press, San Diego, California, USA
- Wilde P, A Manal, M Stodden, E Sieverding, U Hilderbrandt, H Bothe (2009). Biodiversity of arbuscular mycorrhizal fungi in roots and soils of two salt marshes. *Environ Microbiol* 11:1548–1561
- Wu QS, YM Huang, Y Li, Nasrullah, XH He (2014). Contribution of arbuscular mycorrhizas to glomalin-related soil protein, soil organic carbon and aggregate stability in citrus rhizosphere. *Intl J Agric Biol* 16:207–212
- Xiang T, ER Vivoni, DJ Gochis (2014). Seasonal evolution of ecohydrological controls on land surface temperature over complex terrain. *Water Resour Res* 50:3852–3874
- Yang L, X Sui, Y Liu, J Wang, Y Wu, T Zhang, H Ni (2018). Abundance and diversity of arbuscular mycorrhizal fungi in *Calamagrostis angustifolia* wetlands of the Sanjiang plain, China. *Intl J Agric Biol* 20:1424–1432
- Zhu X, F Song, S Liu, F Liu (2016). Role of arbuscular mycorrhiza in alleviating salinity stress in wheat (*Triticum aestivum* L.) grown under ambient and elevated CO₂. *J Agron Crop Sci* 202:486–496